



**WATER  
QUALITY**

Decalcifies the water so that it recovers its original properties, eliminating excess lime and impurities. Thus, it is transformed into water that is much more suitable for consumption, hygiene and cleaning.



**HYGIENE AS  
NEVER BEFORE**

Softened water is perfect for total hygiene. Helps maintain shine, health and softness of skin and hair. It also protects your clothing items by helping to maintain their original color and softness.

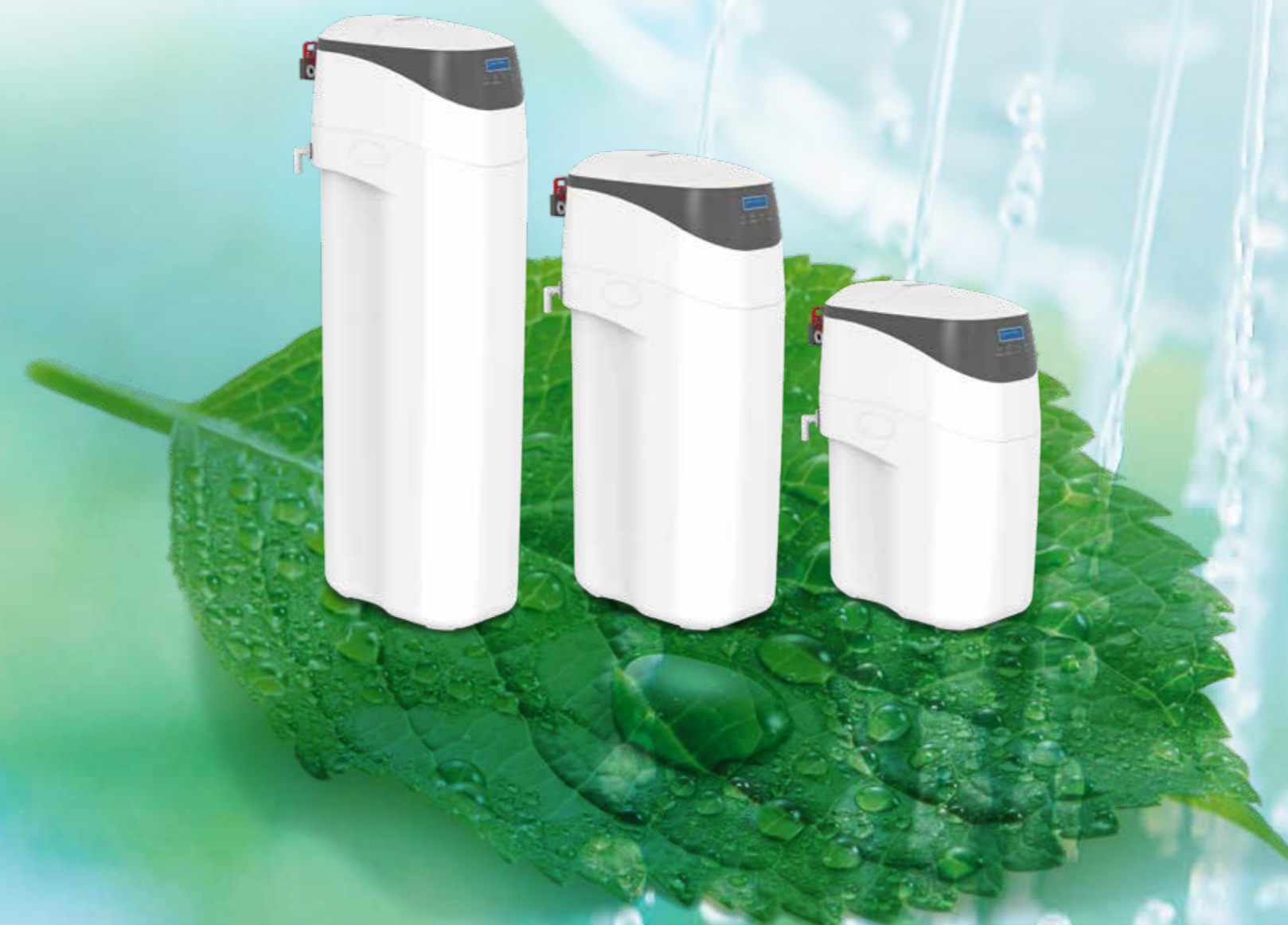


**SAVINGS FOR  
YOUR POCKET**

Installing a softener in your home is an investment that will end up bringing you great savings in a very short time. A longer useful life of your appliances, less consumption of cleaning products and cosmetics to hydrate the skin.

# SOFTENER VD

8L | 12L | 18L






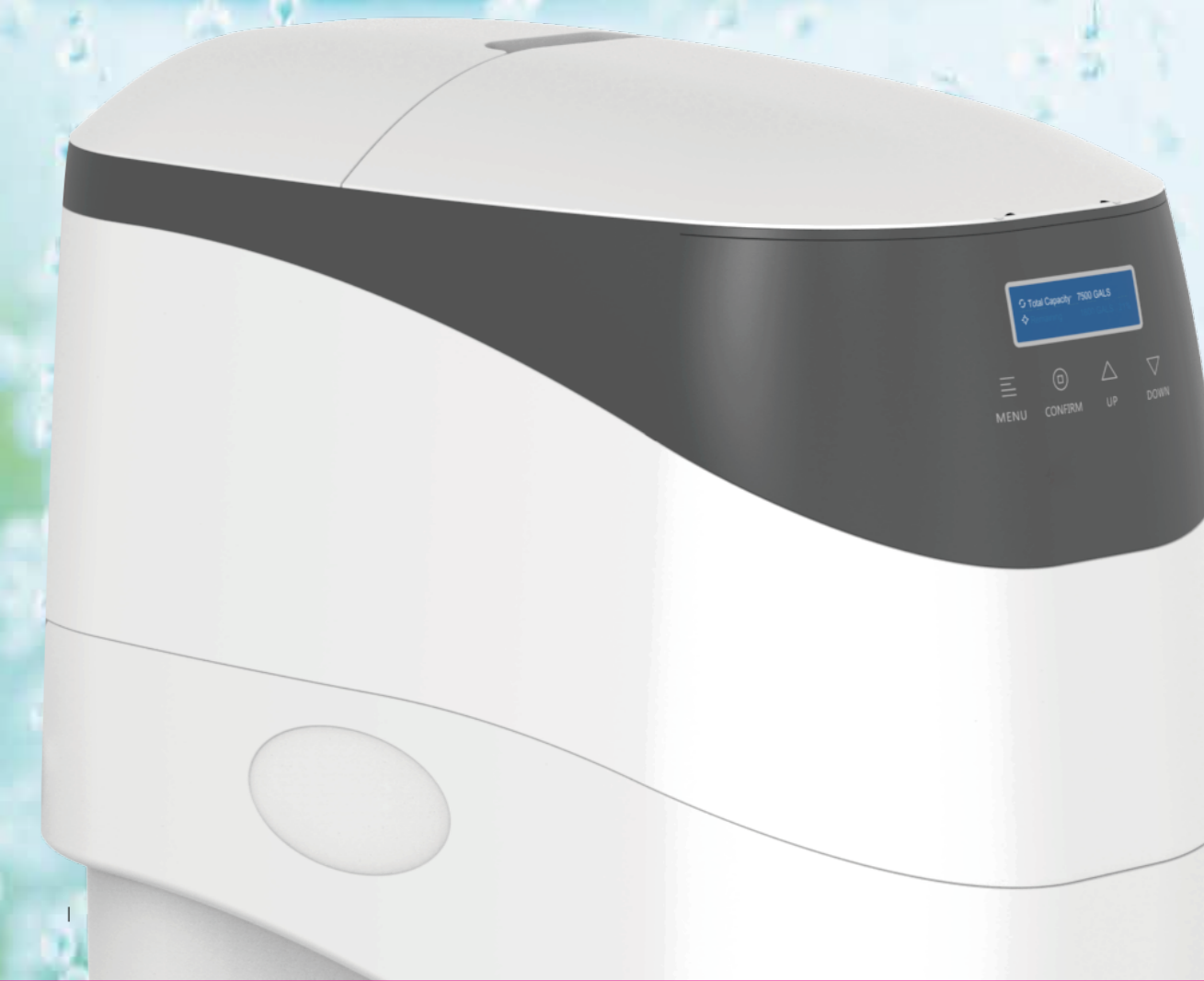
960531 - Commercial brochure Softeners VD - v.0

# SOFTENER VD

8L | 12L | 18L

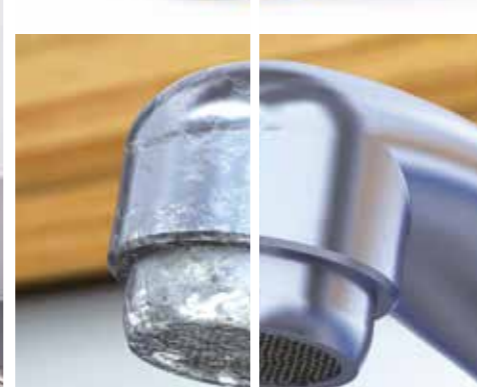
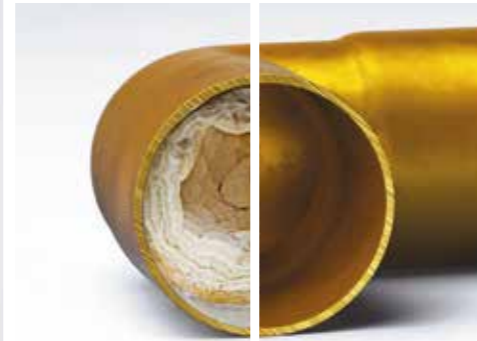
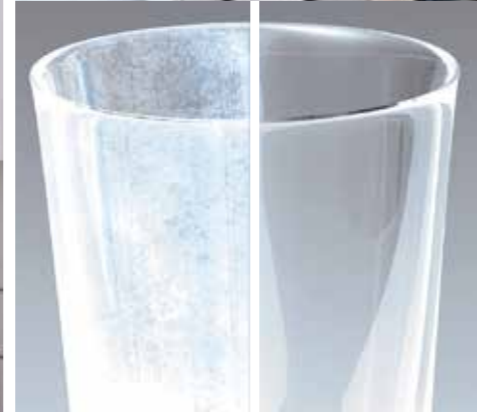
## New Softener water

-  Automatic system
-  Touch buttons
-  Automatic download  
ideal for holidays



# SOFTENER VD

**VD SOFTENERS** decalcify the water so that it recovers its original properties, eliminating excess lime and impurities. Thus, it is transformed into water that is much more suitable for consumption, hygiene and cleaning.



The ideal softened water for sensitive skin. Reduce spending on creams and moisturizing products.



Cleaner clothes, brighter colors and softer fabrics.

Glassware and tableware will be protected from limescale, saving money on anti-limescale chemicals. In addition, your appliances such as the washing machine, heaters, dishwasher, etc. They will last longer and consume less anti-limescale products.

Protect your installation and prevent your pipes from becoming clogged with lime. Thus increasing the energy consumption to heat the water.

Sanitaryware and taps protected and always shiny as the first day.



# SOFTENER VD

8L | 12L | 18L

- Unique and high-end exterior design
- Compact, ideal for under-sink installation
- Removable panel, perfect for maintenance.
- IMD screen with touch buttons
- Front panel provides excellent visibility

EASY TO USE ADVANCED ELECTRONIC PROGRAMMER:

AVAILABLE IN THREE SIZES:

8L

12L

18L

### CHARACTERISTICS

| MODEL  | VD 8  | VD 12                 | VD 18                 |
|--|---|-----------------------|-----------------------|
| CONTROL SYSTEM:                                      | BNT-850 control valve                                       |                       |                       |
| TYPE OF REGENERATION:                                | Downward flow   |                       |                       |
| REGENERATION MODE:                                   | Immediate meter, delayed meter, day cancellation, vacation. |                       |                       |
| RESIN TYPE:  | Strong cationic   | Strong cationic       | Strong cationic       |
| WORKING FLOW:  | 0,9 m <sup>3</sup> /h                                       | 1,3 m <sup>3</sup> /h | 1,5 m <sup>3</sup> /h |
| INLET PRESSURE (MAX-MIN):                            | 0,21 - 0,86 Mpa   |                       |                       |
| INLET TEMPERATURE (MAX-MIN):                         | 4°C - 45 °C   |                       |                       |
| SALT CAPACITY:                                       | 15 kg   | 29 kg                 | 46 kg                 |
| WATER USED FOR REGENERATION (AT SALT DOSE OF 96 G/L) | 31 L  | 53 L                  | 75 L                  |
| ELECTRICAL CONNECTION                                | 220V / 50Hz - 24VAC   |                       |                       |
| POWER SUPPLY   | Output 12V AC 650mA   |                       |                       |
| TEMPERATURE RANGE                                    | 4 °C - 45 °C  |                       |                       |

\* Notes: Softener performance data is for reference only, may vary depending on application and water quality.

DESIGN  
COMPACT  
ADAPTS  
TO ANY  
SPACE

